

MONTHLY MEMBERSHIP PROGRESS REPORT

LOCATION INDIA

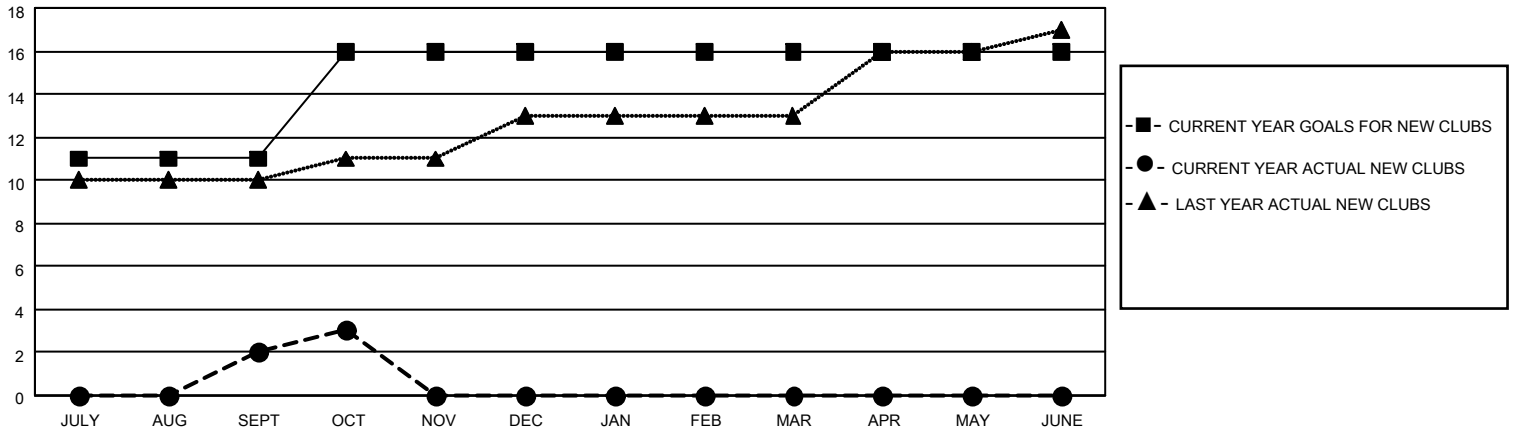
District 321A2

Results as of: 10/31/2022

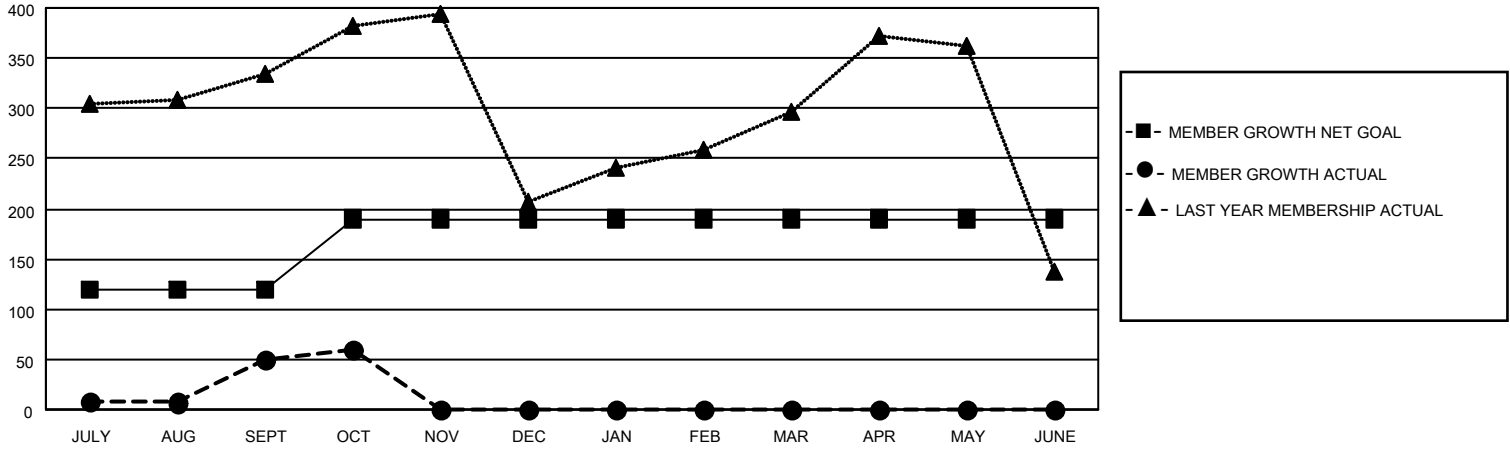
Clubs			
RESULTS FOR 2022-2023			
QUARTER	NEW CLUB GOAL	NEW CLUBS	DROPPED CLUBS
JULY/AUG/SEPT	11	2	4
OCT/NOV/DEC	5	1	0
JAN/FEB/MAR	0	0	0
APR/MAY/JUNE	0	0	0

Members			
RESULTS FOR 2022-2023			
QUARTER	MEMBER GROWTH NET GOAL	MEMBER GROWTH ACTUAL	DROPPED MEMBERS ACTUAL (including transfers)
JULY/AUG/SEPT	120	135	61
OCT/NOV/DEC	70	25	15
JAN/FEB/MAR	0	0	0
APR/MAY/JUNE	0	0	0

GOALS AND ACTUAL NEW CLUBS CUMULATIVE



GOALS AND ACTUAL MEMBERS CUMULATIVE



DROPPED CLUBS: 4

29 CLUBS OF 153 ADDED 1 OR MORE NEW MEMBERS

GENDER DISTRIBUTION

DROPPED MEMBERS

DECEASED	0
CLUB CANCELLED	2
OTHER	74
TOTAL	76

[CLICK HERE FOR CUMULATIVE MEMBERSHIP DATA](#)

MALE	2,654 (63.61%)
FEMALE	1,518 (36.39%)
NON BINARY	0 (0.00%)
PREFER NOT TO ANSWER	0 (0.00%)

TOTAL FAMILY UNIT MEMBERS 3,042

FAMILY MEMBERS PAYING HALF DUES 1,857